

**TS-7M Truing Stand****ASSEMBLY**

Tools needed for assembly: One 5mm hex wrench and one 11mm or 7/16" wrench.

1. Identify left and right uprights. Insert one #537 upright guide into each long upright using #544 button head cap screws and #132S washers. Tighten securely.
2. Set #532M right upright on #531 base, placing front edge of upright guide on top edge of base. Insert two #538 stepped sliders through front slot of base and press into right upright. Insert #540 carriage bolt from the rear through square hole in right upright and through slot of base. Install #539 stepped spacer and #260-4 knob onto carriage bolt.
3. Set #533M left upright onto top edge of base and insert #542 carriage bolts through base and upright. Install #132S washers and #131S nuts. Tighten securely.
4. Assemble the gauge holder assembly. Slide #543 cam washer and #549 coil spring onto #541 socket head cap screw. Slide this assembly through the rear hole in #535 gauge holder and through the vertical slot in the #533M left upright. Install #132S washer and thread #536 cam lever and #546 cam barrel onto bolt assembly. Tighten as needed to activate cam action.
5. Place #1746 sliding gauge on front side of gauge holder. Install #494 spacer and #259 knob.
6. Place #534-1 locator clip on top edge of base. Check to make sure the right upright and gauge holder slide easily. A small amount of lubricant may be necessary.

**SET-UP:**

1. Bolt base of TS-7M Truing Stand to workbench for stability.
2. After removing wheel from motorcycle, inspect rim for cracks, bulges, dents, and flat spots. Check for broken spokes and for spoke nipples that may be rounded or rusted. Make sure hub is not damaged. Repair or replace parts as needed.
3. Lubricate each spoke nipple. Clean excess lubricant from wheel.
4. Use a wrench properly sized to fit the wheel's spoke nipples.

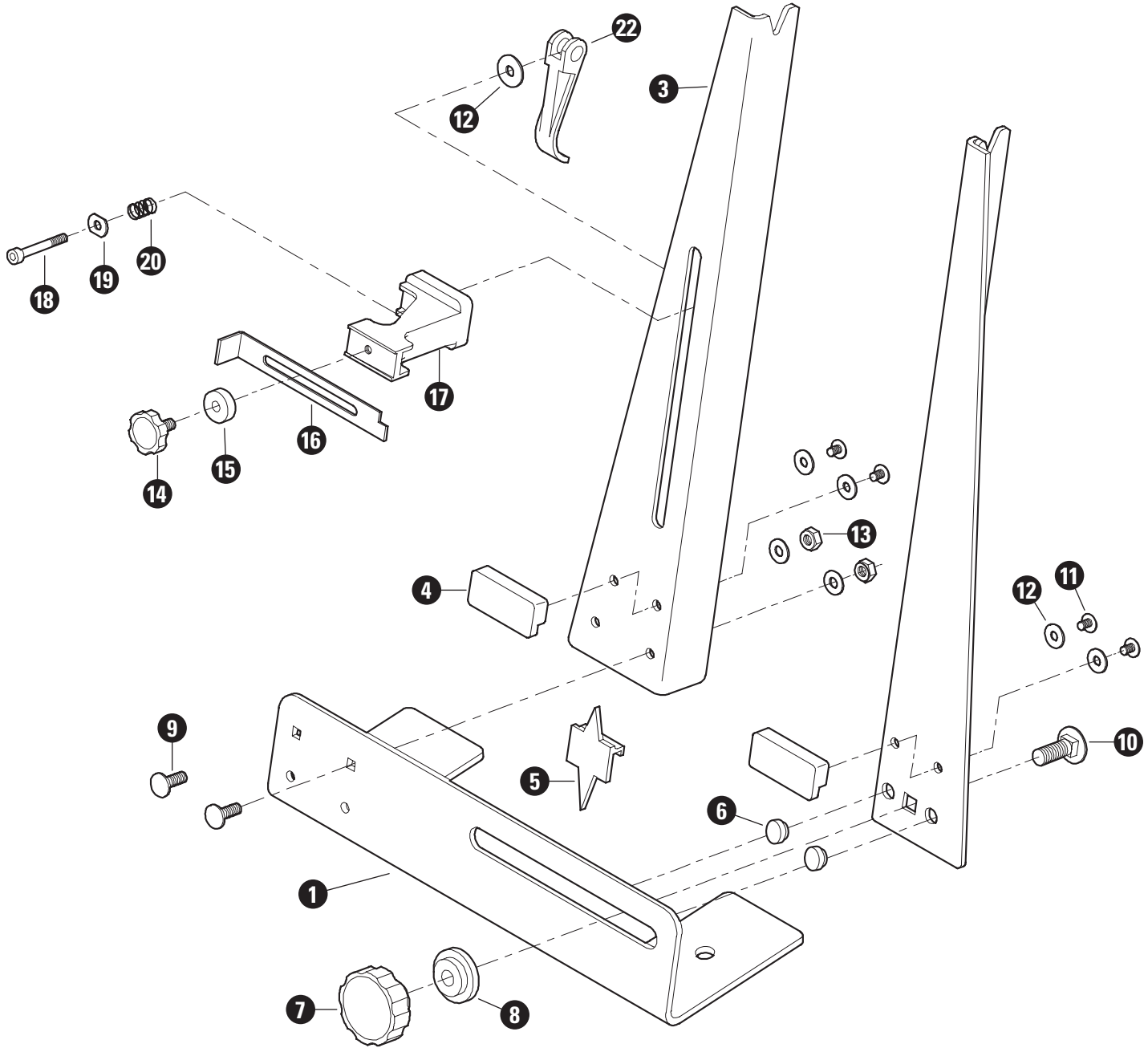
**LATERAL TRUING BASICS:****CORRECTING SIDE TO SIDE ERRORS**

1. Remove tire (if desired). Place axle thru hub and set wheel into "V" notch of truing stand uprights. Loosen knob and adjust right upright as needed to fit the wheel's hub width. Tighten knob.
2. Position gauge to sidewall of rim. Spin wheel slowly and look for side-to-side wobbles. Locate largest wobble.
3. If rim wobbles to the right, tighten left side nipples within area of wobble 1/4" turn. If rim wobbles to the left, tighten right side nipples within area of wobble 1/4" turn. Spin wheel and note impact. Repeat as needed to remove wobble. Note: If further tightening could cause nipple damage or create uneven spoke tension, similar results can be achieved by loosening the opposite side nipples 1/4" turn within area of wobble (for example, if rim wobbles to the right, loosen right side nipples within area of wobble).
4. Repeat procedure on other wobbles until wheel runs straight.

**RADIAL TRUING BASICS:****CORRECTING ROUNDNESS ERRORS**

1. Remove tire. Place axle through hub and set wheel into "V" notch of uprights. Loosen knob and adjust right upright as needed to fit the wheel's hub width. Tighten knob.
2. Position gauge to rest just under outside edge of rim. Spin wheel slowly and look for areas where rim moves toward gauge (high spot) or dips away from gauge tip (low spot).
3. If rim has a high spot, it needs to be pulled away from the gauge. Tighten nipples within area of high spot 1/4" turn. Check result and repeat as needed until high spot is removed.
4. If rim has a low spot, it needs to be pushed toward the gauge. Loosen nipples within area of low spot 1/4" turn. Check result and repeat as needed until low spot is removed.
5. Adjustments made to correct high and low spots may have affected lateral true of wheel. Re-true as needed until wheel is both straight and round.

Additional instructions and photos are available at [www.parktoolmotorcycle.com](http://www.parktoolmotorcycle.com).



## TS-7M PART NUMBERS

Ref. #	Part #	Description	Qty.
1	531	Base	1
2	532M	Right Upright	1
3	533M	Left Upright	1
4	537	Upright Guide	2
5	534-1	Locator Clip	1
6	538	Stepped Slider	2
7	260-4	Knob 3/8 - 16	1
8	539	Stepped Spacer	1
9	542	Carriage Bolt 1/4 - 20 x 5/8	2
10	540	Carriage Bolt 3/8 - 16 x 1/4	1
11	289	Button Head Cap Screw M6 x 12	4

Ref. #	Part #	Description	Qty.
12	132S	Washer	7
13	131S	Hex Nut 1/4 - 20	2
14	259	Knob & Shaft 1/4 - 20	1
15	494	Gauge Spacer	1
16	1746	Gauge	1
17	535	Gauge Holder	1
18	541	Socket Head Cap Screw M6 x 40	1
19	543	Cam Washer	1
20	549	Coil Spring	1
21	536	Cam Lever	1
22	546	Cam Barrel	1